



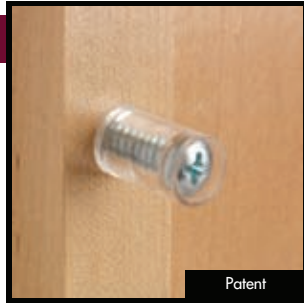
False Fronts

False Front Clips were developed to attach finished fronts to cabinet openings with limited usage, such as Sink Base Cabinets. **TENN-TEX** Plastics offers several different styles to fit various openings. They are equally useful for access panels on boats, spas or any kind of decorative panel that must remain removable. Please contact us for ***The Simple Solution*** to your False Front Applications.

T-190

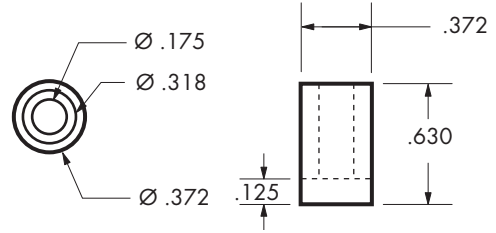
T-190

Clear



Patent

False Front Dowel for #8 Screw



B-124, B-172, B-191



005

8,000

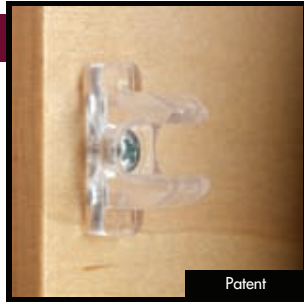


600,000

T-191

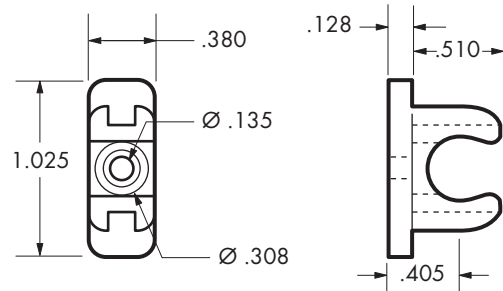
T-191

Clear



Patent

False Front Clip



B-173



002

8,000

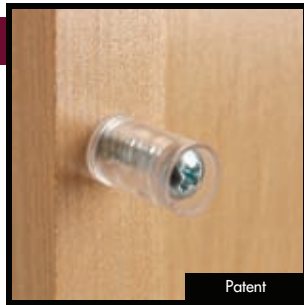


256,000

T-192

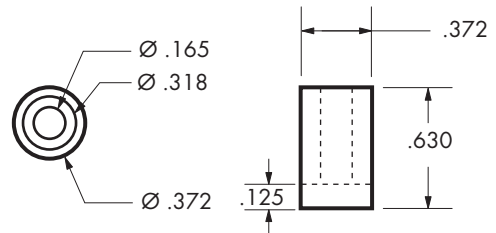
T-192

Clear



Patent

False Front Dowel for #6 Screw



B-303



005

8,000



600,000

T-194

T-194

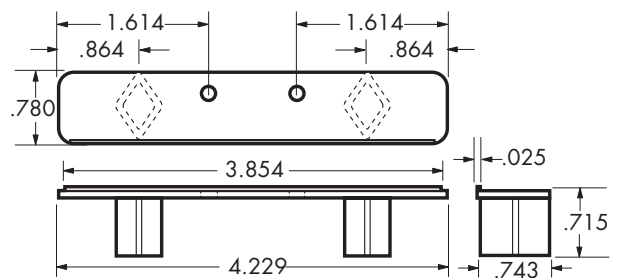
Natural



Patent

used with T-195

False Front Clip 4 1/2" Opening



B-339



002

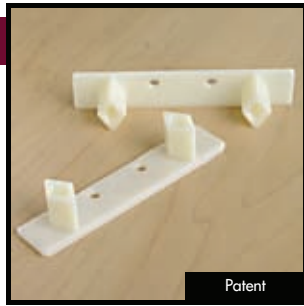
800



25,600

T-194-01

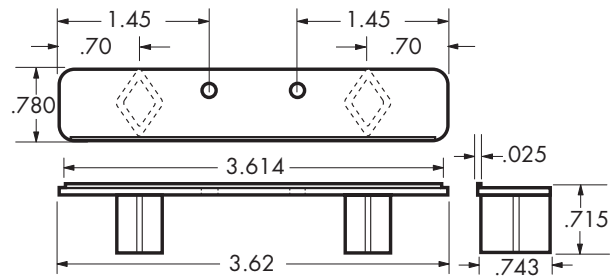
T-194-01 Natural



used with T-195

Patent

False Front Clip for 4" Opening



B-340



16



002

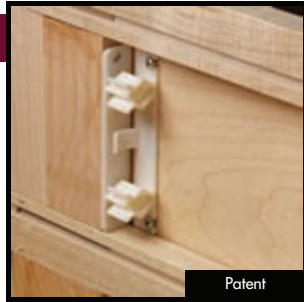
800



25,600

T-195

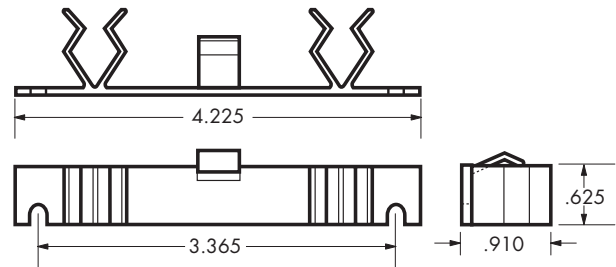
T-195 Natural



used with T-194 or T-194-01

Patent

False Front Clip



B-339, B-340



16

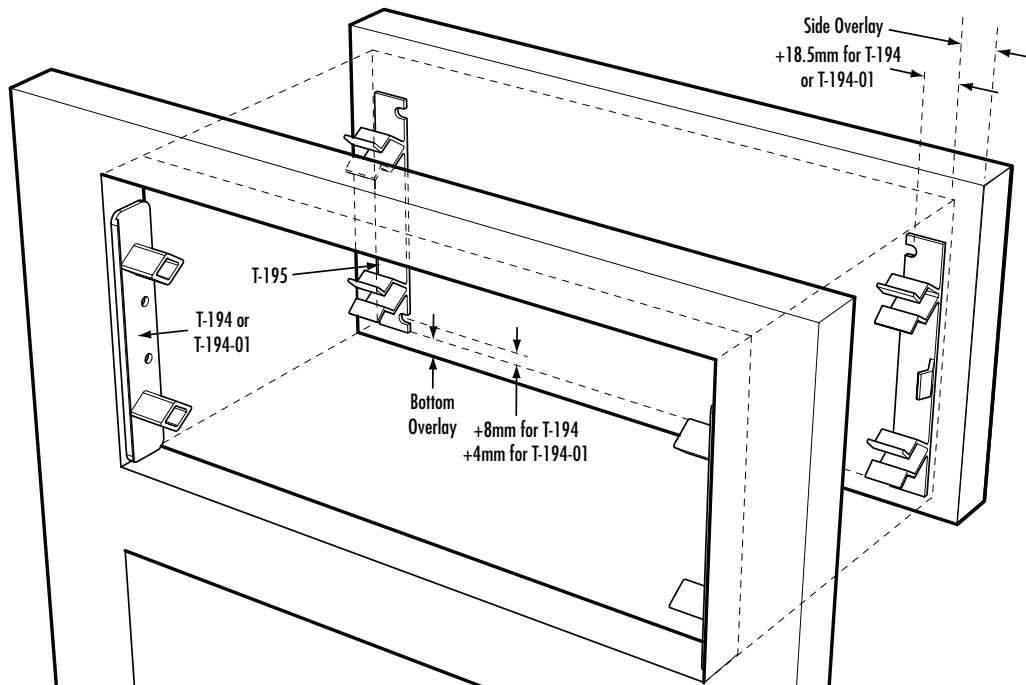


001

800



14,400



False Front Bracket Mounting Locations:

T-194:	Side Overlay	+18.5mm (.0726")	T-194-01:	Side Overlay	+18.5mm (.0726")
	Bottom Overlay	+8.0mm (0.315")		Bottom Overlay	+4.0mm (0.158")

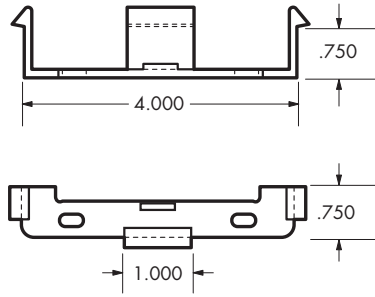
T-300

T-300

Natural



False Front Clip for 4" Opening



500



16,000

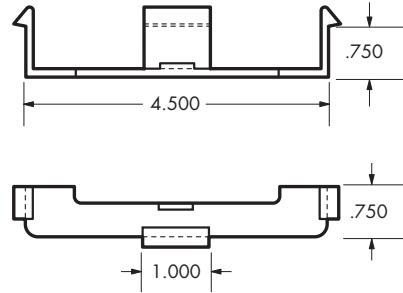
T-304

T-304

Natural



False Front Clip for 4 1/2" Opening



500

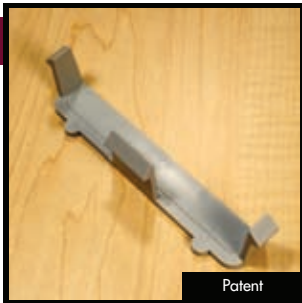


16,000

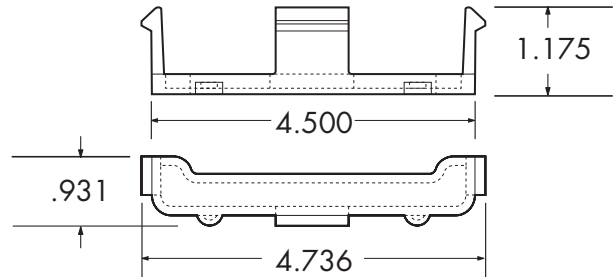
T-309-01

T-309-01

Gray



False Front Clip with Standoff for 4 1/2" Opening



500



16,000

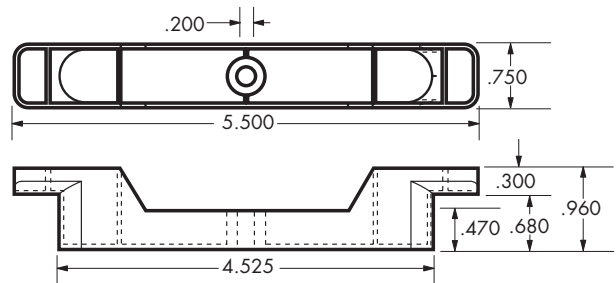
T-900

T-900

Natural



False Front Connector for 4 1/2" Opening



700



12,600