



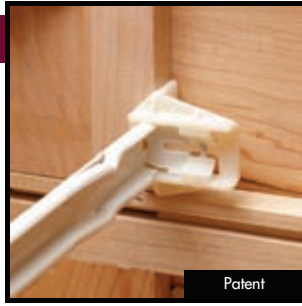
Brackets, Peninsula

Peninsula Cabinets require a Face-Frame to be built on the front and back of the cabinet. This demands special drawer slide brackets for mounting drawer slides. **TENN-TEX** Plastics has developed a variety of Peninsula Brackets to work with most V-Notch Side Mount and Undermount Drawer Slides. We offer you ***The Simple Solution*** for your Peninsula Bracket Applications.

C-101

C-101

Natural



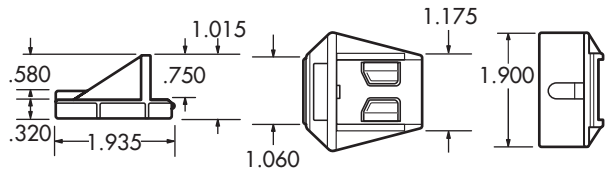
Patent

64358-01

Side Mount Peninsula V-Notch Bracket

GRA

6604



500

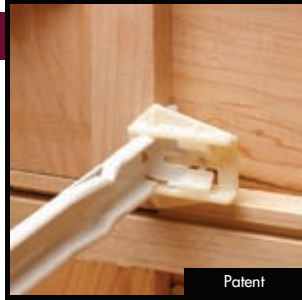


16,000

C-101-01

C-101-01

Natural



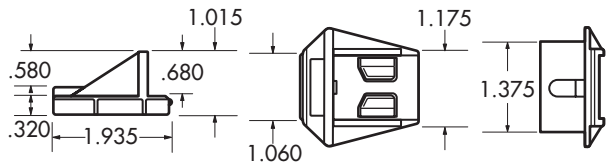
Patent

64360-17

Side Mount Peninsula V-Notch Bracket

GRA

6604



500



16,000

C-102

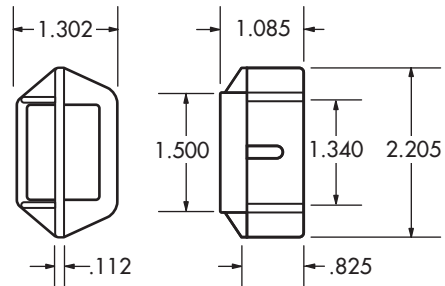
C-102

Natural



GRA

Undermount Peninsula Bracket V-Notch



500



16,000

C-128

C-128

White

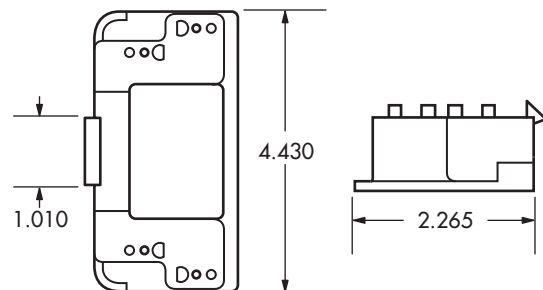
C-128-01

Beige



GRA

Peninsula False Front Mounting Bracket



300



5,400

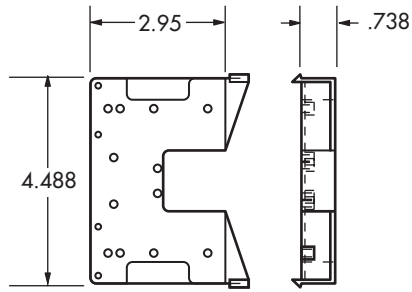
C-130

C-130

Natural



Peninsula Bracket



001

230



4,140

C-186

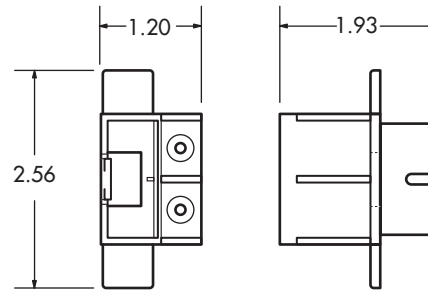
C-186

Black



HET

PB Peninsula Back Bracket



002

500



16,000

C-187

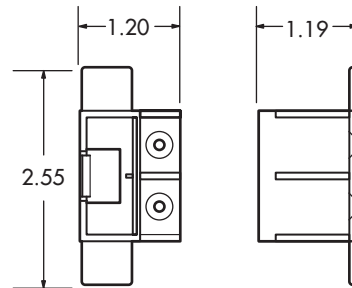
C-187

Black



HET

PBC Peninsula Back Bracket



002

400



12,800

C-207

C-207

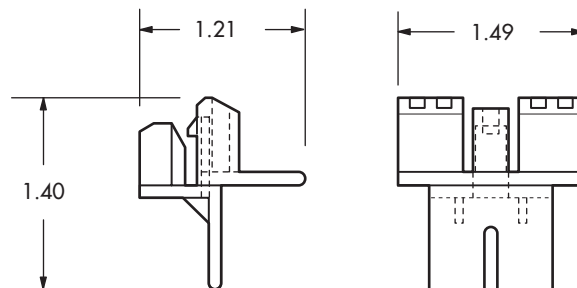
Natural



HET



PB Peninsula Mounting Bracket



002

1,200



38,400

C-242

C-242

Natural

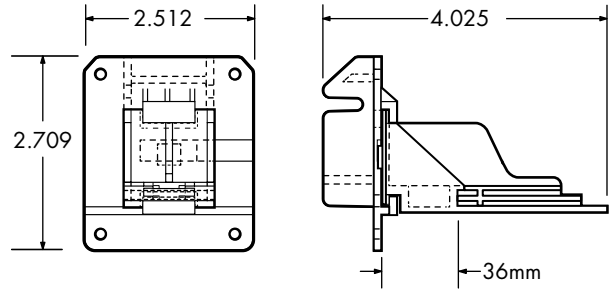


C-237 & C-234 Assembly

BLU



Peninsula Bracket for Undermount



250



5,250

C-284

C-284

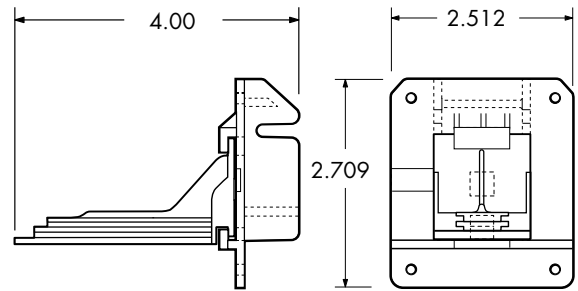
Natural



C-237 & C-279 Assembly



Peninsula Undermount Bracket, No Stop



250



5,250